



**PARIS SQUARE
&
KEEFER STEPS**

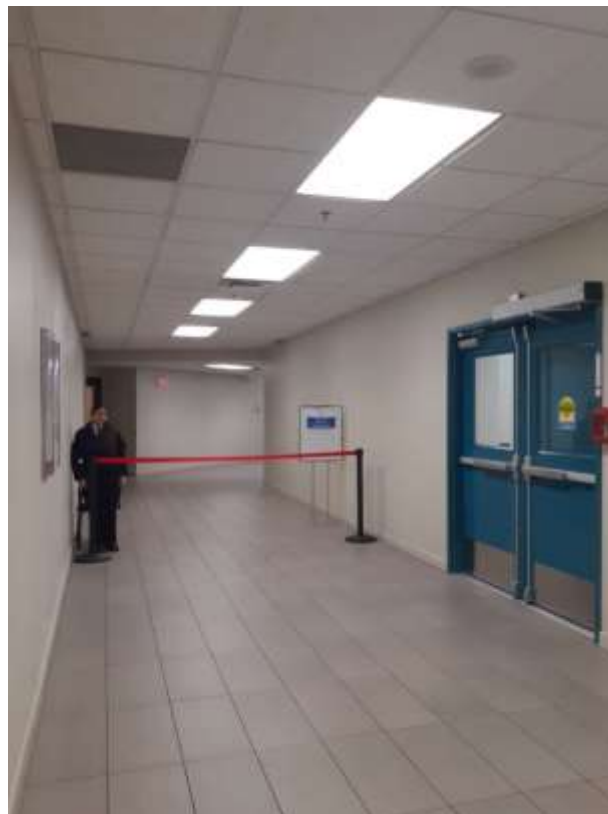
**COVID-19 PROTOCOLS
EFFECTIVE JUNE 2020**

**The following procedures will be implemented to comply with
PROTECTIVE & PHYSICAL DISTANCING
measures set by the public health and government authorities.**

Execute physical distancing protocols to reduce risk of patrons, tenants & staff

CROWD CONTROL at the ENTRANCE/EXIT DOOR

- **We shall keep G/F MAIN ENTRANCE (between T&T and Paris Place entrance) & 2/F SOUTH ENTRANCE (between Footbridge & Muna Place) open to pedestrian traffic**
- **The North entrance (facing Abbott St.) and 2/F West Entrance (beside Keefer Place Eye Clinic) will remain closed**
- **Blue Gate in the balcony will open to foot traffic from 6AM - 7PM**
- **A guard will be posted at the FOODBRIDGE Hallway (see photo) to monitor the flow of people traffic inside the premises. He will also patrol the interior area of the building to ensure that protocols are in place**

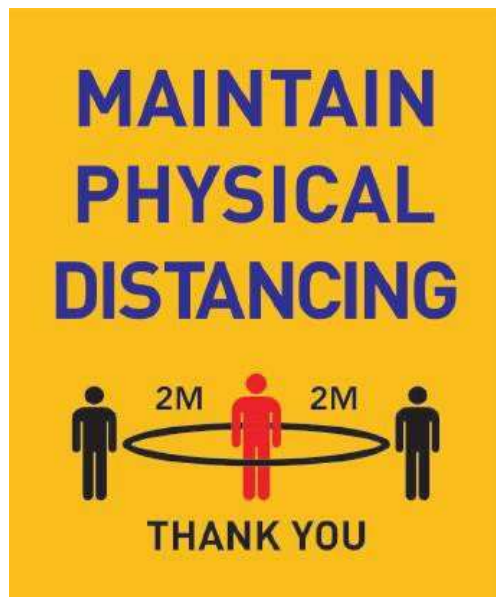


-
- Crowd control barrier will also be installed to limit the flow of traffic to the NORTH side
 - Directional arrows will be installed on the floor
 - Patrons are requested to "KEEP RIGHT"



CROWD CONTROL at the BEATTY LANE PARKADE ENTRANCE

- Beatty Lane parkade entrance will remain open to vehicular traffic from 6AM to 10PM
- A floor decal will be posted at P1 mall entrance to remind patrons of social distancing



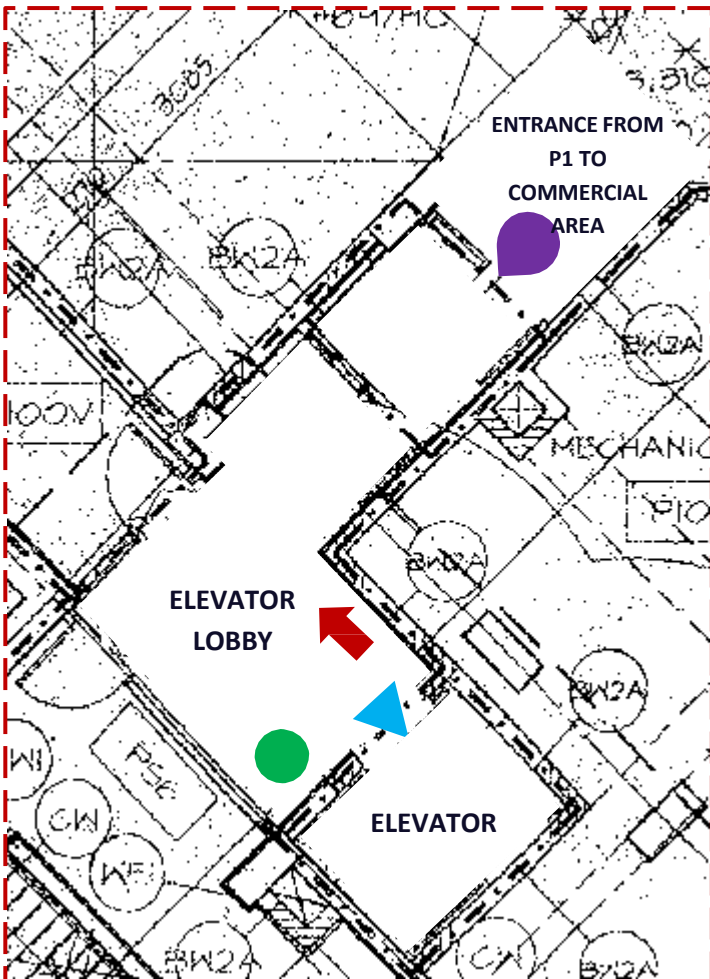
-
- A floor decal will also be placed at P1 elevator lobby as guide for patrons. (to locate the waiting area for elevator and to keep right when out from elevator)







- Elevator signage will also be posted on all elevator level to limit elevator occupancy to 2 persons per trip



PARIS SQUARE - P1 PARKADE: SIGNAGE LOCATION



-  : "Please wait here" - floor decal
-  : Directional arrows - floor decal
-  : Elevator signage
-  : Physical distancing signage

CROWD CONTROL at the G/F Main Entrance

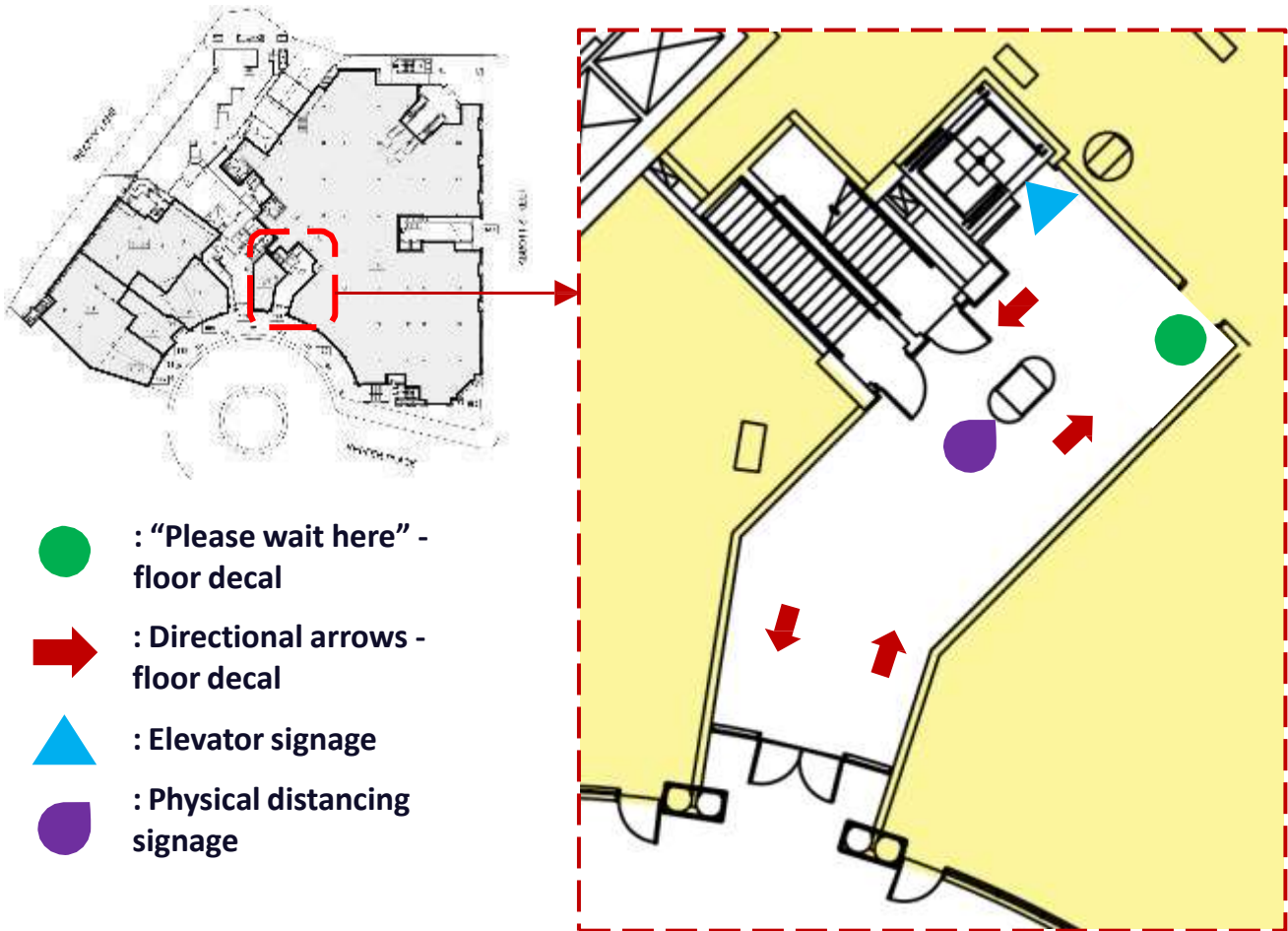
- **Social Distancing signage will be installed on the column and "keep right" arrows installed on the floor**
- **"Use the stairs" signage will also be posted between the S1 (leading to parkade) & S2 (leading to level 2) doors**



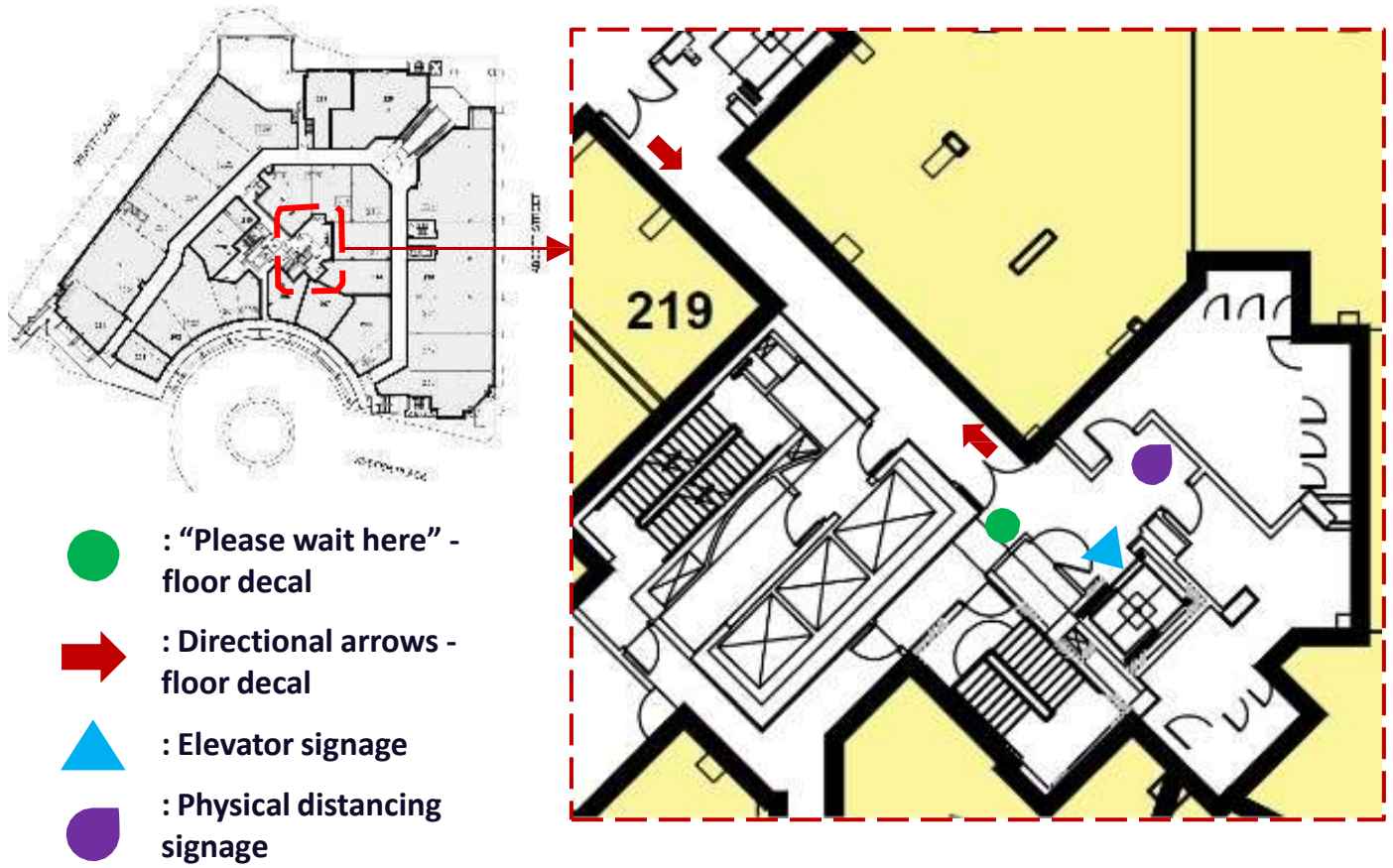
CROWD CONTROL at the WASHROOM

- **Social Distancing signage will be posted on the wall between the male and female washroom. Note that tenants and their respective patrons are the only people allowed to use the washrooms**

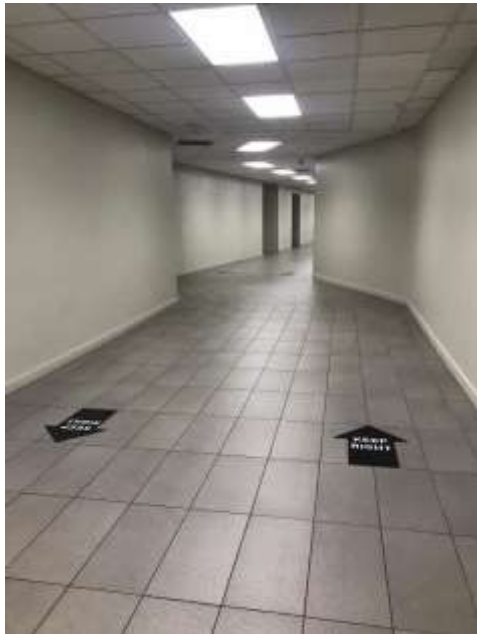
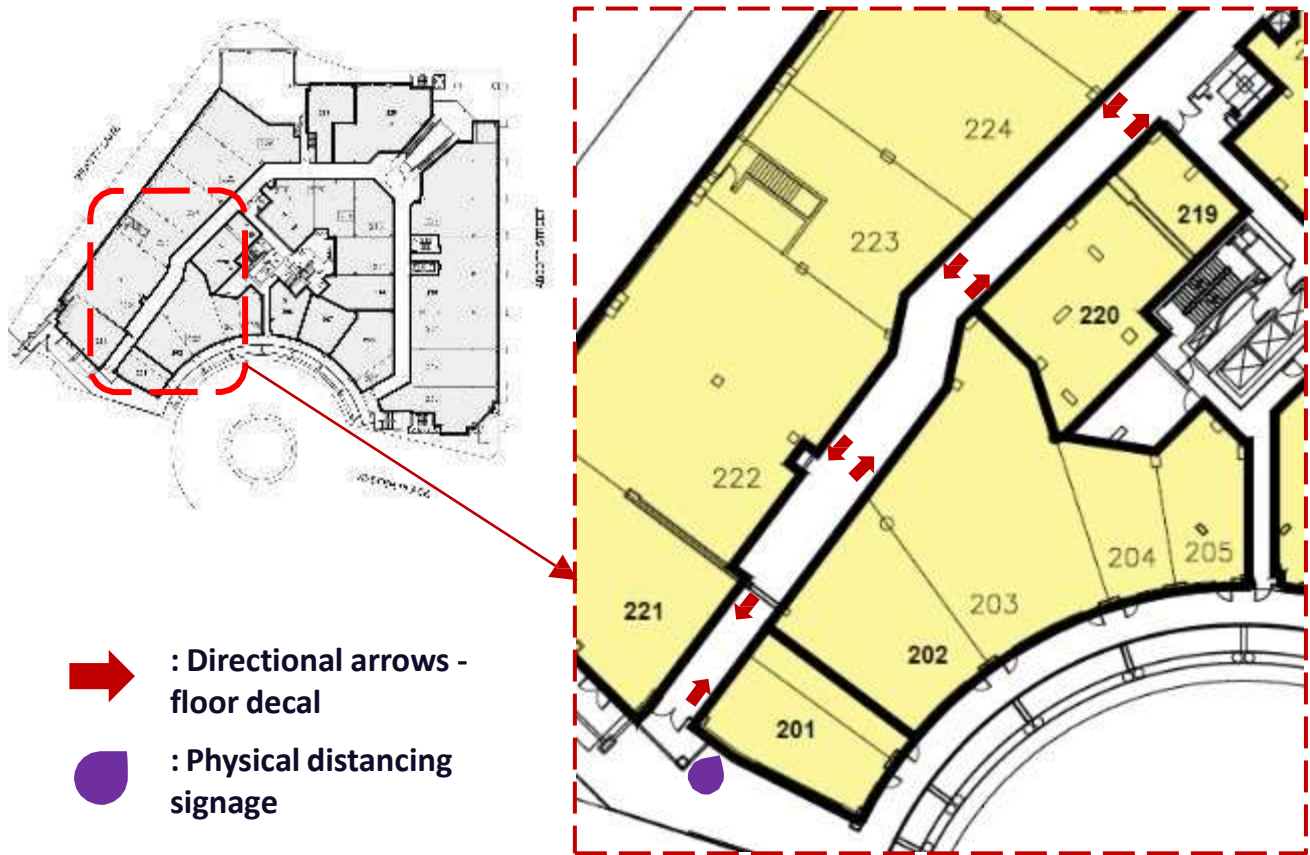
PARIS SQUARE – GROUND FLOOR: SCHEMATIC SIGNAGE LOCATION



PARIS SQUARE – 2ND FLOOR: SCHEMATIC SIGNAGE LOCATION



PARIS SQUARE – 2ND FLOOR: SCHEMATIC SIGNAGE LOCATION



Implement protective controls to secure health and safety of staffs, tenants and patrons

- **High frequency touch points will be sanitized on a regular basis**
- **Since we will promote STAIR USAGE, S1 & S2 stairwells will be revitalized. We shall improve the lighting, repaint the floor and install air freshener to conceal the damp smell of the area.**
- **Security guard stationed in the FOOTBRIDGE hallway will be provided with alcohol spray /hand sanitizer that patrons can avail of**

Signage & Elevator at Keefer Steps

- **Social Distancing signage will be posted on 4 areas around the courtyard**
 - On the planter box in Beatty Square
 - On the pole in front of Stadium-Chinatown Skytrain station exit/entrance
 - On the wall of Beatty Lane
 - On planter box in Keefer Steps
- **Elevator signage will also be posted on the ground level & upper level of KS elevator**

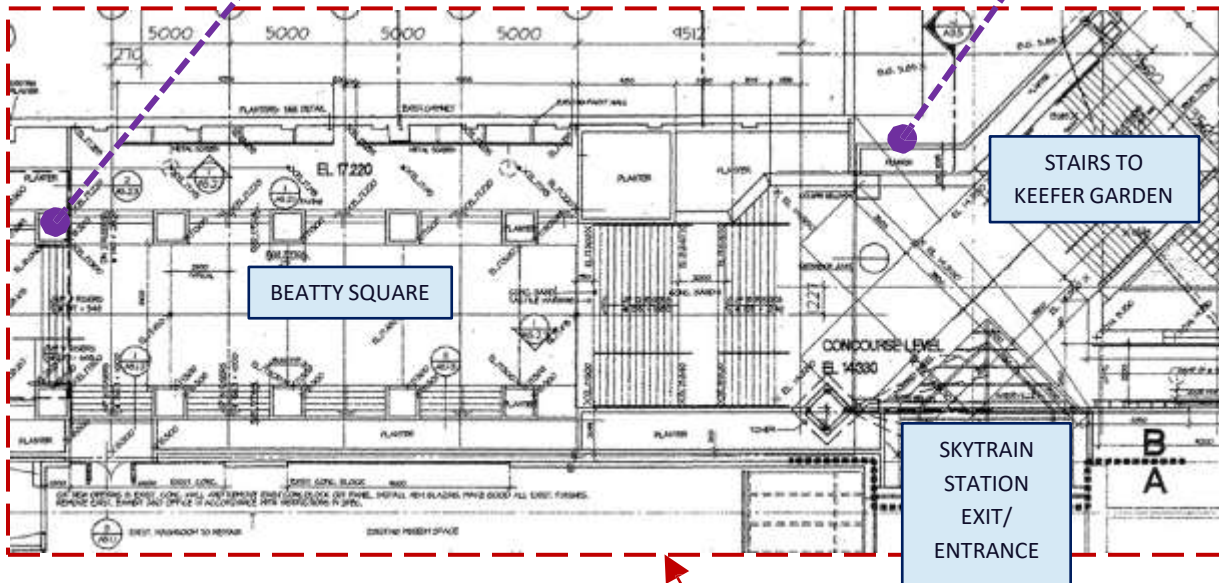
KEEFER GARDEN: SCHEMATIC SIGNAGE LOCATION



Signage for pedestrian coming from Beatty Street



Signage for pedestrian coming from Skytrain Station



KEEFER GARDEN: SCHEMATIC SIGNAGE LOCATION



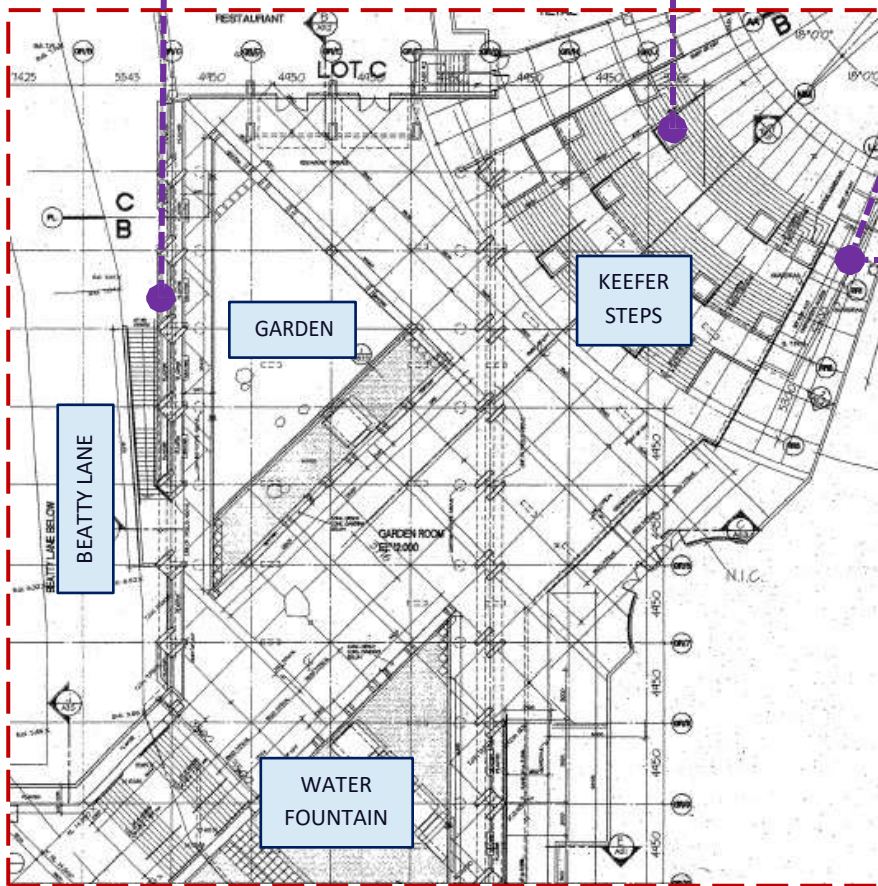
Signage for pedestrian coming from Betty Lane



Signage for pedestrian coming from Keefer Circle



Ground level – KS Elevator Signage



Upper level – KS Elevator signage

